



Sailing Instructions

Name of the event: **NEW CALEDONIA GROUPAMA RACE**

Dates : **25 September to 1st October 2016**

Venue : **Nouméa - New-Caledonia**

Organizing Authority : **Cercle Nautique Calédonien (C.N.C.)**

Preamble

During registration, competitors (each member of the crew) living in France shall present

- *a valid FFVoile license, bearing the medical stamp and parental consent in the case of minors.*
- *measurement form or certificate of the boat*

Overseas competitors shall show evidence of their membership of an ISAF member national authority and current third party liability insurance cover for a minimum value of 1.5 million Euros.

1 RULES

- 1.1 The regatta will be governed by the rules as defined in The Racing Rules of Sailing 2013/2016, (RRS).
- 1.2 When a boat cannot determine with certainty what tack the other boat is on, she shall keep clear of that boat. Competitors are reminded that part of the RRS definition of "room" includes taking into account the existing conditions (including visibility).
Nothing in the Notice of Race or Sailing Instructions relieves a boat of her responsibility under civil law to comply with the International Regulations for Preventing Collisions at Sea or local regulations.
- 1.3 The Offshore Special Regulation Category 3 plus Liferaft
- 1.4 IRC classes rules A, B & C shall apply to boats racing in the IRC class.
- 1.5 ORC class rules shall apply to boats racing in the ORC class
- 1.6 If there is a conflict between languages, the French text will take precedence.
- 1.7 Racing rules changed by the SI are:
Race signals, 29.1, 40, 44.3 (c), 52, 55, 60.1(a), 63.1, 66, A4.2, A5.

2 NOTICES TO COMPETITORS

Notices to competitors will be posted on the official notice board located at the entry of the CNC yacht club on the left inside.

3 CHANGES TO SAILING INSTRUCTIONS

Any change to the Sailing Instructions will be posted on the official notice board before 0730hrs the day of the start of the race, except any change to the schedule which shall be posted by 2000hrs the day before it will take effect.

4 SIGNALS MADE ASHORE

- 4.1 Signals made ashore will be displayed on the flag mast, located in front of CNC Yacht Club.
- 4.2 When AP Flag is displayed ashore, the warning signal will be made not less than 30 minutes after the lowering of AP Flag. This changes Race Signals.

5 RACE SCHEDULE

Date and time for the warning signal is Sunday 25 september 2016 at 1000hrs

6 COURSE

The course to sail is described in attachment 1, 2 and 3. The length of the course is approximately 654 NM.

7 MARKS and BOUNDARY LINES

- 7.1 The starting marks shall be the Race Committee Signal boat at the starboard end of the starting line and the Race Committee Pin boat on the port end.
- 7.2 Marks 1 and 2 shall be orange cylinders.



- 7.3 Virtual Marks: two virtual marks called VM1 and VM2 shall be used. GPS positions shall use the WGS84 datum described as follows:
 VM1 : lat 18° 47.74' South long 163° 30.53' East
 VM2 : lat 19° 01.36' South long 163° 02.36' East
 A boat shall satisfy the race committee they have rounded a virtual mark to the race committee's satisfaction and a boat that fails to do so may be penalised by the race committee without a hearing. The penalty may be at the race committee's sole discretion. A boat so penalised shall be entitled to a hearing on request. This changes Rule 63.1 and A5.
- 7.4 The finishing marks will be the red lateral mark "Denoel" at the entrance of "petite passe" of Noumea port at the port end and a large white cylinder at the starboard end.
- 7.5 There are boundary lines (lines that marks the limits of the racing area) running:
- around the start line, mark 1 and mark 2 during the time between the first warning signal until the last boat rounds the Green mark "Ile aux canards". Each boundary line lies between two adjacent floating buoys A, B, C, D, E, F, G as defined in attachment 1.
 - between VM1 and VM2 north of reefs at the Grand Passage. (Attachment 1)

Any boat crossing a boundary line shall be subject to protest by the race committee. Each boundary line is a continuing obstruction in respect of RRS. Infraction of this rule is not subject to protest by another boat. This changes rule RRS 60.1.

8 THE START

- 8.1 The race will be started by using RRS 26 with the warning signal given 5 minutes before the starting signal. The GROUPAMA flag will be used as class flag.
- 8.2 Individual recalls may be announced on radio (VHF channel 77)
- 8.3 The starting line will be between staffs displaying an orange flag on the starboard and port end.
- 8.4 A boat that fails to return and start when signalled in accordance with RRS 29.1 shall receive a 30-minute elapsed time penalty. This changes RRS Appendix A 4.2

9 THE FINISH

- 9.1 The finishing line is between the red lateral mark "Denoel" at the entrance of "petite passe" of Noumea port and a large white cylinder mark (lat 22° 17.37' long 166° 25.99'). (Attachment 1)
- 9.2 When approaching the finishing line boats shall call GROUPAMA Race Control on channel 77 as soon as:
- ° they are located at 30 minutes from the finishing line
 - ° the race committee requests

The boats shall remain in contact using channel 77 once she is in the lagoon until she is anchored in Noumea.

10 RADIO COMMUNICATION

A combination of VHF radio, mobile phone, and Iridium satellite phone will be used for position reporting and race communication. The race Communications Plan is at Attachment 3. The use of external routing for the event is prohibited. Each skipper will sign a commitment for the honour (Declaration), included in the check-out form.

11 PENALTY SYSTEM

In accordance with RRS 64.1(a) in determining penalties, the protest committee may:

- disqualify the yacht, or
- impose a scoring penalty as per RRS 44.3(c) as amended by Sailing Instruction 16.3, or
- make any other arrangement.

The scoring penalty RRS 44.3 (c) is changed as follows. Delete the last sentence and insert: "All other yachts affected, including any yacht with the same score shall be moved up one place."

12 TIME LIMIT

Time limit for finishing the course is Saturday 1st of October 1800hrs.

13 PROTESTS AND REQUESTS FOR REDRESS

- 13.1 Protest forms are available at the race office located at CNC yacht club. Protests shall be delivered within the protest time limit.
- 13.2 Protest time limit is 2 hours after the protesting boat has finished the race.
- 13.3 Notices will be posted as soon as possible after the protest time limit to inform competitors of hearings in which they are parties or named as witnesses. Hearings will be held in the jury room located at the CNC.
- 13.4 Notices of protests by the race committee or protest committee will be posted to inform boats under rule 61.1(b).
- 13.5 Breaches of instructions 1.8, 8, 9.2, 10, 15, 23, 24 will not be grounds for a protest by a boat. This changes rule 60.1(a).
- 13.6 A request for reopening a hearing shall be delivered no later than 60 minutes after the requesting party was informed of the decision on that day. This changes RRS 66.

14 RESULTS

Results will be:

- Line Honours for monohulls
- Line Honours for multihulls
- Handicap systems for monohulls:
 - ORC Results will be decided by the application of the offshore performance line as stated on the yacht's certificate. Results overall and by group
 - IRC : Results will be decided by the application of the IRC Time Corrector (T.C.C) as stated on the yacht's certificate as a multiplier of elapsed times.
- Handicap systems for multihulls:
 - Multi 2000 results will be decided by the application of the Multi 2000 time corrector as stated on the yacht's certificate as a multiplier of elapsed time.
 - Club Handicap results will be decided by the application of the club handicap corrector as a multiplier of elapsed times.

15 SAFETY REGULATIONS

- 15.1 Check-out and check-in system. Check in forms and Finish Declarations are to be lodged at the Race office (CNC) for yachts finishing in daylight within two hours. For yachts finishing in darkness by 0900 hours the following day.
- 15.2 A boat that retires from the race shall notify the race committee as soon as possible.
- 15.3 Radio communication will be on VHF radio channel 77, mobile phone and by iridium phone according to the Attachment 3.
- 15.4 Competitors shall wear personal flotation devices when they are on deck during the race, without flag Y displayed before or with the warning signal. This changes RRS 40.
- 15.5 Each boat shall be on watch keeping on channel 16 and 77 from the start to the finish of the race.
- 15.6 All life rafts shall be stowed on the deck or on the special trunk located outside the boat.
- 15.7 A boat shall carry a tracking device supplied by the organising authority. A boat on which such a unit fails or ceases to operate will be required to provide additional position reports by radio or Iridium phone.
- 15.8 The race committee may request a GPS log of rounding the "Virtual Marks" and all boats are required to log the time of rounding the "Virtual marks"
- 15.9 In accordance with rule 42(i), a boat may use her engine whilst racing:
- (a) if she cannot manoeuvre safely, or
 - (b) is in danger of interfering with commercial traffic, or
 - (c) has run aground, or
 - (d) is in imminent danger of running aground.
- Any engine use is to be declared on a yacht's Finish Declaration. The Race Committee will decide what penalty (if any) shall apply. This changes rule A5.



16 REPLACEMENT OF CREW OR EQUIPMENT

Crew replacement will not be authorized without prior written authorization from the race committee or jury. The boat's Crew List shall be attached to the Check in starting form. Substitution of crew is not permitted during the race.

17 EQUIPMENT AND MEASUREMENT CHECKS

- 17.1 A boat or equipment may be inspected at any time for compliance with the safety rules and sailing instructions.
- 17.2 Ratings used in calculating corrected time are in Attachment 4.

18 POWER

RRS 52 is amended to permit powered winches.

19 TRASH DISPOSAL

Boats shall not put trash in the water. Trash shall be kept onboard until back ashore. RRS 55 is amended adding the following sentence to the rule: "However, discarding cotton, wool or any other biodegradable material when setting a sail is permitted".

20 PRIZES

The prize giving will be held on 1st of October at the CNC Yacht club at 1800 hrs. Prizes will be allocated during the prize giving according to the Attachment 3.

A special prize may be given for the best videos and photos that will be transmitted during the race.

21 DISCLAIMER OF LIABILITY

Competitors participate in the regatta entirely at their own risk. The decision to race or continue racing is their own responsibility. (RRS 4)
The organizing authority will not accept any liability for material damage or personal injury or death sustained in conjunction with or prior to, during or after the regatta.

22 ADVERTISING

Competitors shall display the advertisement provided by the Organizing Authority, according to the following instructions: sticker on the bow and the racing flag on the back stay at least 1.5m above the deck.

23 YELLOW BRICK TRACKERS

- 23.1 It is mandatory for all boats to carry the YB Tracker unit provided by the CNC whilst racing. The racetracking can be viewed on the race web site.
- 23.2 Nothing shall be done to inhibit YB Tracker transmissions.
- 23.3 YB Trackers remain the property of CNC. It is each skipper's responsibility to return their tracker in good condition. Each skipper is liable for the full replacement cost if they fail to return the tracker in good condition and time.

24 MEDIA

- 24.1 Boats shall call the race office with media information. The communication is made by group schedules according to the Attachment 3. Telephone no.: **(687) 26.92.34**
0430 – 0530: Group 1
1430 - 1530: Group 2
- 24.2 Boats shall send at least 4 videos (30-45 seconds) and 10 photos during the race to media@groupamarace.nc

Attachment 1

COURSE:

- Start
- Mark 1 rounded to port,
- Mark 2 rounded to port,
- Port starting mark rounded to port,
- Green buoy "Ile aux Canards" rounded to port.
- Cap NDua rounded to port,
- Virtual Mark 1 (VM1 lat 18° 47.74' South long 163° 30.53' East) rounded to port
- Virtual Mark 2 (VM2 lat 19° 01.36' South long 163° 02.36' East) rounded to port
- Finish

BOUNDARY LINES :

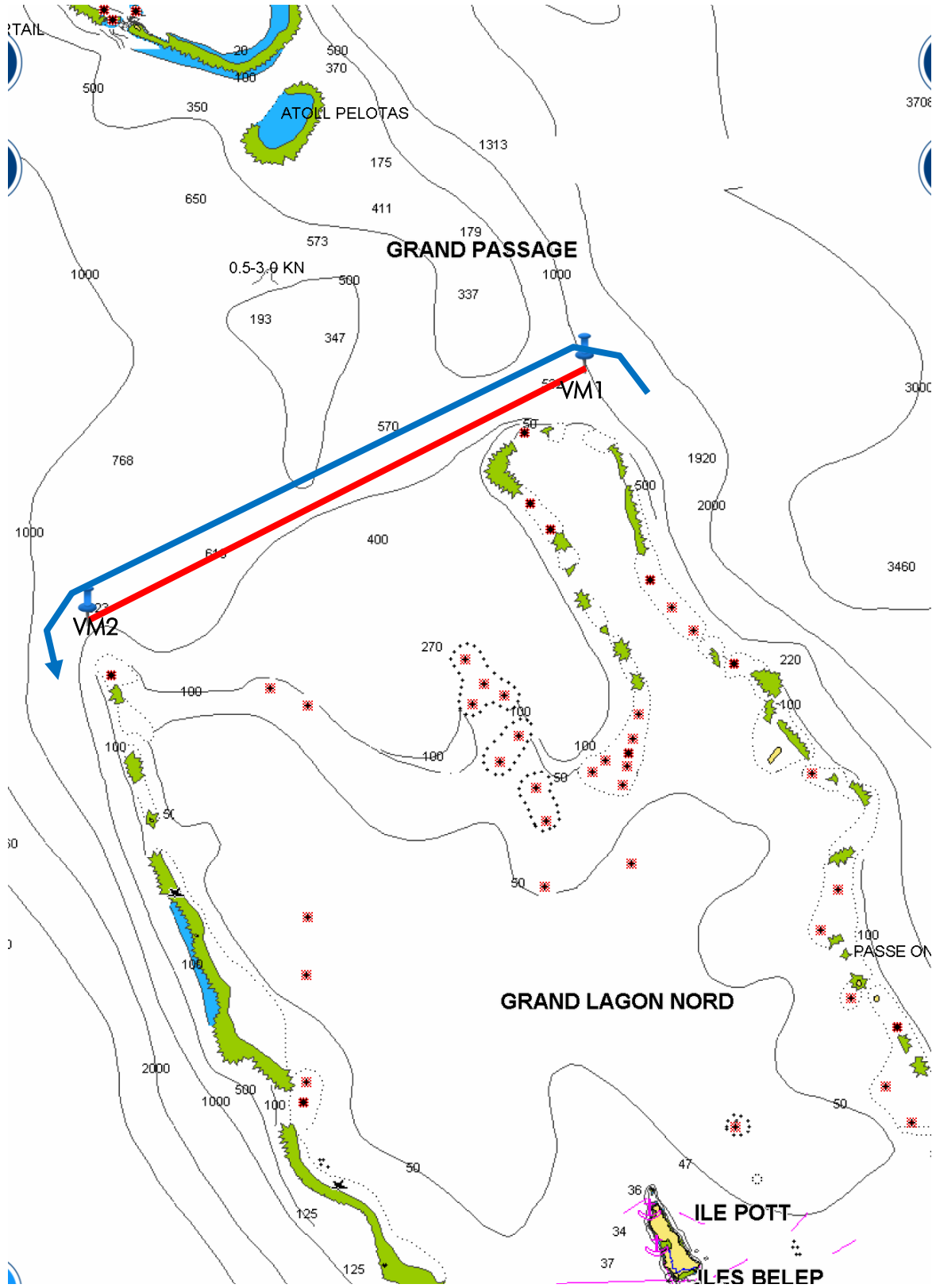
- Between the first warning signal and the time the last boat rounds Green mark "Ile aux canards", the boats can't cross the boundary lines between two adjacent floating buoys: A, B, C, D, E, F, G.

The boundary lines are designated by 6 floating buoys:

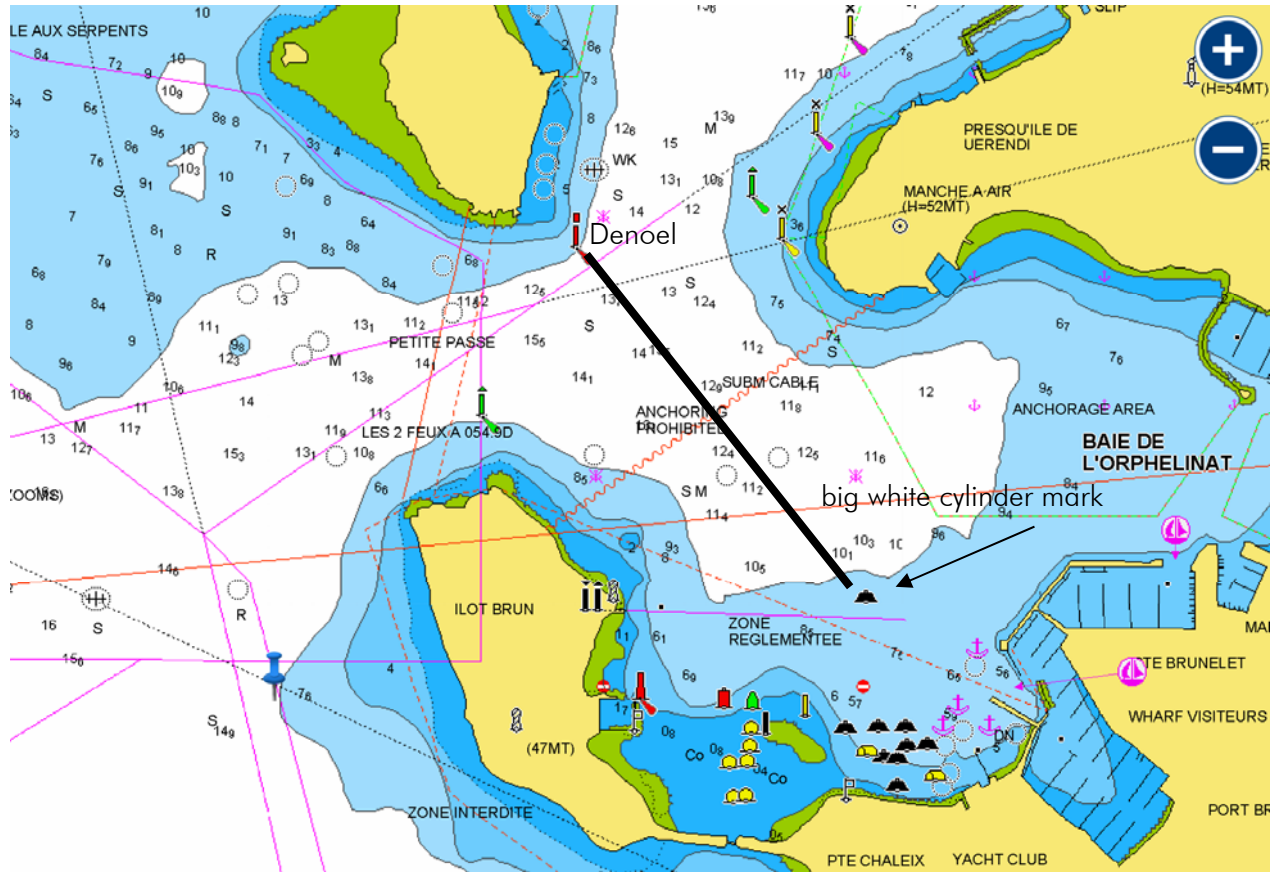
BOUNDARY LINE 1	A : Saint Andre Buoy	B : yellow cylinder
BOUNDARY LINE 2	B : yellow cylinder	C : yellow cylinder
BOUNDARY LINE 3	C : yellow cylinder	D : yellow cylinder
BOUNDARY LINE 4	D : yellow cylinder	E : yellow cylinder
BOUNDARY LINE 5	E : yellow cylinder	F : Saint Andre Buoy
BOUNDARY LINE 6	F : Saint Andre Buoy	G : green buoy "Ile aux Canards"

- between VM1 and VM2 north of reefs at the Grand Passage.

Boundary line in the Grand Passage



FINISING



Attachment 2

Legal hour of sunset and sunrise

Day	Sunrise	Sunset
Sunday 25	05h39	17h49
Monday 26	05h38	17h50
Tuesday 27	05h37	17h50
Wednesday 28	05h36	17h50
Thursday 29	05h35	17h51
Friday 30	05h34	17h51
Saturday 1er	05h33	17h51

Attachment 3

You shall keep listening watch on VHF on channel 77 at all times.

1 / YB Tracker: A YB Tracker unit is mounted on your boat by the organizing Authority. Do not touch the beacon during the entire race. Leave the antenna clear. Return beacon to the race secretariat after finishing.

2 / Position reporting: 2 sms messages will be sent on a daily basis by iridium at 07H00 and 17H00 with transmission of the positions of all the competitors (according to ship code, position X and Y), and possibly safety message.

3 / Media: boats shall call the race office for media information. The communication is made by group schedules if listed below. Telephone no: **(687) 26.92.34**

0430– 0530: Group 1

SCALLYWAG	David Witt	Maxi Dovell	HKG 2276
ICHI BAN	Matt Allen	Carkeek 60	AUS01
KEEL BILL - LEBLANC ILLUMINATIONS	Patrick Baldi	SHAW 35	F 9163
NOTORIOUS	Christiaan Arns	FIRST 44,7	NZL 9447
EYE CANDY	Thierry Leseigneur	SYDNEY 38	F 9777
BANQUE DE NOUVELLE CALEDONIE	Michel Quintin	JPK 10,80	F 39337
KETAL	Olivier Decouzon	SUN FAST 3200 -	F 43663
GUMMO - PHYTOCAL	Alain Varichon	Bongo 9,6	F 29053
JESSICA RABBIT	Philippe Coste	ORMA 40	

1430-1530: Group 2

BEAU GESTE	Karl Kwok	Botin 80	HKG 1997
RAN TAN II	Brian Petersen	ELLIOTT 50	NZL 8977
DIOGENE	Ludovic Chaillou	Pogo 40	F9787
XLR8-Province Sud	JC Vergé - Nicolas Vergé	Elliott 10,5	F 9449
SPEED MARINE - MSC	Renaud GERARDIN	SYDNEY 38	F 43733
BOULÈGUE - PAO PROD	Vincent Trinquet	YOUNG 9.9 -	F 5191
ODYSSEY	Bruno Hautier	DUFOUR GL 410	F 9792
BIRDIES FURAX 2	Alain Vilas	CATA	F 9785
TEAM VODAFONE SAILING	Simon Hull	ORMA 60	NZL 021
MOEMETI	Claude Rigal	OUTREMER 45 -	TAH 007

4) Important phone numbers :

Race office CNC : (687) 79.31.39 / (687) 26.92.34

Coast Guard : (687) 29.23.32

Navy vessel : bateau DUMBEA

Imarsat : 00 870 773 160 849

N° permanence : (687) 29.40.73

Code position SMS			NUMERO IRIDIUM	PORTABLE	MMSI (VHF)
A	SCALLYWAG	David Witt	00 88 16 61 58 51 17		503 706 800
B	BEAU GESTE	Karl Kwok			
C	ICHI BAN	Matt Allen	00 87 07 73 21 20 05		503 003 990
D	RAN TAN II	Brian Petersen	00 88 16 51 40 27 01		
E	KEEL BILL - LEBLANC ILLUMINATIONS	Patrick Baldi	00 88 16 32 65 54 73		540 002 510
F	DIOGENE	Ludovic Chaillou		84 96 86	540 011 360
G	NOTORIOUS	Christiaan Arns	00 88 16 51 40 13 58		512 004 186
H	XLR8-Province Sud	JC Vergé - Nicolas Vergé	00 88 16 31 58 54 49	75 11 63	540 009 060
I	EYE CANDY	Thierry Leseigneur	00 88 16 31 58 54 48	74 80 85	540 012 220
J	SPEED MARINE - MSC	Renaud GERARDIN	00 88 16 31 58 52 92	77 98 04	540 010 920
K	BANQUE DE NOUVELLE CALEDONIE	Michel Quintin	00 88 16 31 58 54 64	78 38 37	540 012 380
L	BOULÈGUE - PAO PROD	Vincent Trinquet	00 88 16 32 65 50 64	75 04 08	540 010 840
M	KETAL	Olivier Decouzon	00 88 16 31 58 54 39		540 010 580
N	ODYSSEY	Bruno Hautier		76 23 66	540 013 020
O	GUMMO - PHYTOCAL	Alain Varichon		79 62 81	540 005 320
P	BIRDIES FURAX 2	Alain Vilas	00 88 16 32 66 15 20	81 25 46	540 007 750
Q	TEAM VODAFONE SAILING	Simon Hull		64 21 81 1935	
R	MOEMETI	Claude Rigal	00 88 16 31 67 42 82		546 005 860
S	JESSICA RABBIT	Philippe Coste	00 88 16 31 58 54 65	77 19 36	540 013 170

Attachment 4

Entry list and rating groups

		Nom course	Skipper	Type	N° voile	type	CERTIFICAT type			ORC			IRC	Club	Country
1	A	SCALLYWAG	David Witt	Maxi Dovell	HKG 2276	Mono		IRC					1,934		HKG
2	B	BEAU GESTE	Karl Kwok	Botin 80	HKG 1997	Mono		IRC					1,78		HKG
3	C	ICHI BAN	Matt Allen	Carkeek 60	AUS01	Mono		IRC					1,504		AUS
4	D	RAN TAN II	Brian Petersen	ELLIOTT 50	NZL 8977	Mono		IRC					1,401		NZL
5	E	KEEL BILL - LEBLANC ILLUMINATIONS	Patrick Baldi	SHAW 35	F 9163	Mono	ORC			524,7	0,769	15,4			FRA
6	F	DIOGENE	Ludovic Chaillou	Pogo 40	F9787	Mono	ORC			544,5	0,674	-18,8			FRA
7	G	NOTORIOUS	Christiaan Arns	FIRST 44,7	NZL 9447	Mono	ORC	IRC		562,1	0,767	52,9	1,121		NZL
8	H	XLR8-Province Sud	JC Vergé - Nicolas Vergé	Elliott 10,5	F 9449	Mono	ORC			565,3	0,707	15,4			FRA
9	I	EYE CANDY	Thierry Leseigneur	SYDNEY 38	F 9777	Mono	ORC	IRC		573,4	0,743	46,3	1,136		FRA
10	J	SPEED MARINE - MSC	Renaud GERARDIN	SYDNEY 38	F 43733	Mono	ORC	IRC		576,7	0,732	41	1,103		FRA
11	K	BANQUE DE NOUVELLE CALEDONIE	Michel Quintin	JPK 10,80	F 39337	Mono	ORC	IRC		591,7	0,71	38,3	1,056		FRA
12	L	BOULÈGUE - PAO PROD	Vincent Trinquet	YOUNG 9.9 -	F 5191	Mono	ORC	IRC		613,1	0,694	43,9	1,034		FRA
13	M	KETAL	Olivier Decouzon	SUN FAST 3200	F 43663	Mono	ORC	IRC		630,2	0,625	11,7	1,001		FRA
14	N	ODYSSEY	Bruno Hautier	DUFOUR GL 41	F 9792	Mono	ORC			636,1	0,595	-2,2			FRA
15	O	GUMMO - PHYTOCAL	Alain Varichon	Bongo 9,6	F 29053	Mono	ORC			647,6	0,595	-0,5			FRA
16	P	BIRDIES FURAX 2	Alain Vilas	CATA	F 9785	Multi			Multi					0,913	FRA
17	Q	TEAM VODAFONE SAILING	Simon Hull	ORMA 60	NZL 021	Multi			Multi					1,504	NZL
18	R	MOEMETI	Claude Rigal	OUTREMER 45	TAH 007	Multi			Multi					0,801	TAH
19	S	JESSICA RABBIT	Philippe Coste	ORMA 40		Multi			Multi						FRA

ORC	GPH (sec/mile)
Groupe 0	GPH < 510
Groupe 1	510 <= GPH < 550
Groupe 2	550 <= GPH < 590
Groupe 3	590 <= GPH < 630
Groupe 4	GPH >= 630

Attachment 5

Prizes (X PF)

Line honors	Mono		1	100 000	
			2	50 000	
			3	25 000	
	Multi		1	100 000	
			2	50 000	
			3	25 000	
Handicap	Mono	ORC (overall)		1	100 000
				2	50 000
				3	25 000
		IRC (overall)		1	100 000
				2	50 000
				3	25 000
	ORC groups		ORC 1	1	30 000
			ORC 2	1	30 000
			ORC 3	1	30 000
			ORC 4	1	30 000
	Multi	Multi 2000		1	20 000
2				10 000	
Multi Club		1	20 000		
		2	10 000		

**START DECLARATION****CHECK OUT**

Name of Skipper :

Boat Name:

Sail N°:

I _____, Skipper of the Boat named above, hereby declare that I am committed to race in the Groupama Race of my own free will, accepting without limitation or qualification, all the Rules, as defined the RRS and the safety regulations.

I have checked the Boat, and I am confident that she is seaworthy and has all the necessary safety equipment and all persons on board are fully briefed on how to use it.

I declare that I have a third party insurance during the race.

I declare that I will finally, before departure, check the weather forecast and, understand it is my responsibility to decide whether or not to start, or continue in the Race, in accordance with RRS Fundamental Rule 4.

I release from liability the organizers, the race director, the Jury, the Race Committee, and any other person or entity involved in organizing this Race in any capacity whatsoever.

Completed in Noumea on:

Signature



CREW LIST

CREW.

Title _____ Forename _____ Surname _____
 Street Address _____ Mobile / Cell _____
 Suburb / City _____ Home Phone _____
 State | | | | Post Code | | | | | Email _____

SHORE BASED NEXT OF KIN

Title _____ Forename _____ Surname _____
 Street Address _____ Mobile / Cell _____
 Suburb / City _____ Home Phone _____
 State | | | | Post Code | | | | | Business Phone _____

CREW.

Title _____ Forename _____ Surname _____
 Street Address _____ Mobile / Cell _____
 Suburb / City _____ Home Phone _____
 State | | | | Post Code | | | | | Email _____

SHORE BASED NEXT OF KIN

Title _____ Forename _____ Surname _____
 Street Address _____ Mobile / Cell _____
 Suburb / City _____ Home Phone _____
 State | | | | Post Code | | | | | Business Phone _____

CREW.

Title _____ Forename _____ Surname _____
 Street Address _____ Mobile / Cell _____
 Suburb / City _____ Home Phone _____
 State | | | | Post Code | | | | | Email _____

SHORE BASED NEXT OF KIN

Title _____ Forename _____ Surname _____
 Street Address _____ Mobile / Cell _____
 Suburb / City _____ Home Phone _____
 State | | | | Post Code | | | | | Business Phone _____

CREW.

Title _____ Forename _____ Surname _____
 Street Address _____ Mobile / Cell _____
 Suburb / City _____ Home Phone _____
 State | | | | Post Code | | | | | Email _____

SHORE BASED NEXT OF KIN

Title _____ Forename _____ Surname _____
 Street Address _____ Mobile / Cell _____
 Suburb / City _____ Home Phone _____
 State | | | | Post Code | | | | | Business Phone _____

Boat Name..... Crew number :.....



CREW LIST

CREW.

Title _____ Forename _____ Surname _____
 Street Address _____ Mobile / Cell _____
 Suburb / City _____ Home Phone _____
 State | | | | Post Code | | | | | Email _____

SHORE BASED NEXT OF KIN

Title _____ Forename _____ Surname _____
 Street Address _____ Mobile / Cell _____
 Suburb / City _____ Home Phone _____
 State | | | | Post Code | | | | | Business Phone _____

CREW.

Title _____ Forename _____ Surname _____
 Street Address _____ Mobile / Cell _____
 Suburb / City _____ Home Phone _____
 State | | | | Post Code | | | | | Email _____

SHORE BASED NEXT OF KIN

Title _____ Forename _____ Surname _____
 Street Address _____ Mobile / Cell _____
 Suburb / City _____ Home Phone _____
 State | | | | Post Code | | | | | Business Phone _____

CREW.

Title _____ Forename _____ Surname _____
 Street Address _____ Mobile / Cell _____
 Suburb / City _____ Home Phone _____
 State | | | | Post Code | | | | | Email _____

SHORE BASED NEXT OF KIN

Title _____ Forename _____ Surname _____
 Street Address _____ Mobile / Cell _____
 Suburb / City _____ Home Phone _____
 State | | | | Post Code | | | | | Business Phone _____

CREW.

Title _____ Forename _____ Surname _____
 Street Address _____ Mobile / Cell _____
 Suburb / City _____ Home Phone _____
 State | | | | Post Code | | | | | Email _____

SHORE BASED NEXT OF KIN

Title _____ Forename _____ Surname _____
 Street Address _____ Mobile / Cell _____
 Suburb / City _____ Home Phone _____
 State | | | | Post Code | | | | | Business Phone _____

Boat Name..... Crew number :.....



CREW LIST

CREW.

Title _____ Forename _____ Surname _____
 Street Address _____ Mobile / Cell _____
 Suburb / City _____ Home Phone _____
 State | | | | Post Code | | | | | Email _____

SHORE BASED NEXT OF KIN

Title _____ Forename _____ Surname _____
 Street Address _____ Mobile / Cell _____
 Suburb / City _____ Home Phone _____
 State | | | | Post Code | | | | | Business Phone _____

CREW.

Title _____ Forename _____ Surname _____
 Street Address _____ Mobile / Cell _____
 Suburb / City _____ Home Phone _____
 State | | | | Post Code | | | | | Email _____

SHORE BASED NEXT OF KIN

Title _____ Forename _____ Surname _____
 Street Address _____ Mobile / Cell _____
 Suburb / City _____ Home Phone _____
 State | | | | Post Code | | | | | Business Phone _____

CREW.

Title _____ Forename _____ Surname _____
 Street Address _____ Mobile / Cell _____
 Suburb / City _____ Home Phone _____
 State | | | | Post Code | | | | | Email _____

SHORE BASED NEXT OF KIN

Title _____ Forename _____ Surname _____
 Street Address _____ Mobile / Cell _____
 Suburb / City _____ Home Phone _____
 State | | | | Post Code | | | | | Business Phone _____

CREW.

Title _____ Forename _____ Surname _____
 Street Address _____ Mobile / Cell _____
 Suburb / City _____ Home Phone _____
 State | | | | Post Code | | | | | Email _____

SHORE BASED NEXT OF KIN

Title _____ Forename _____ Surname _____
 Street Address _____ Mobile / Cell _____
 Suburb / City _____ Home Phone _____
 State | | | | Post Code | | | | | Business Phone _____

Boat Name..... Crew number :.....

**CHECK IN**

Name of Skipper :

Boat Name:

Sail N°:

I _____, Skipper of the Boat named above, confirm that I have competed the Race, and complied with all the Rules, as defined the RRS and the safety regulations

I declare I haven't received any outside assistance other than that specifically allowed for in the Rules.

I declare (delete as appropriate)

- I haven't used the engine for propulsion.

- I have used the engine for propulsion:
 - Date and time

 - Details

Completed in Noumea, on:

Signature