



2022

19th June 2022 – 25th June 2022

Organizing Authority: **Cercle Nautique Calédonien (C.N.C.)**



Sailing Instructions

Cercle Nautique Calédonien as the organising authority will conduct Groupama Race 2022 on the waters surrounding New Caledonia 19th – 25th June 2022.

1 RULES

- 1.1 The regatta will be governed by the rules as defined in The Racing Rules of Sailing 2021-2024, (RRS).
- 1.2 When a boat cannot determine with certainty what tack the other boat is on, she shall keep clear of that boat. Competitors are reminded that part of the RRS definition of “room” includes taking into account the existing conditions (including visibility).
Nothing in the Notice of Race or Sailing Instructions relieves a boat of her responsibility under civil law to comply with the International Regulations for Preventing Collisions at Sea or local regulations.
- 1.3 The World Sailing Offshore Special Regulation (OSR) Category 3 plus Life raft shall apply
- 1.4 IRC rules A, B & C shall apply to boats racing in the IRC class.
- 1.5 ORC rules shall apply to boats racing in the ORC class
- 1.6 Multi 2000 Class boats shall comply to the requirements of the Multi 2000 rules.
- 1.7 If there is a conflict between languages, the English text will take precedence.
- 1.8 Racing rules changed by the SI are:
Race signals, 29.1, 40, 44.3(c), 52, 55, 60.1(a), 63.1, 66, A4.2, A5.
- 1.9 Appendix WP will apply.

2 NOTICES TO COMPETITORS

Notices to competitors will be posted on the official notice board located at the entry of dock A in Port Moselle.

3 CHANGES TO SAILING INSTRUCTIONS

Any change to the Sailing Instructions will be posted on the official notice board before 0730hrs the day of the start of the race, except any change to the schedule which shall be posted by 2000hrs the day before it will take effect.

4 SIGNALS MADE ASHORE

- 4.1 Signals made ashore will be displayed on the flag mast, at the entry of dock A in Port Moselle.
- 4.2 When AP Flag is displayed ashore, the warning signal will be made not less than 30 minutes after the lowering of AP Flag. This changes Race Signals.

5 RACE SCHEDULE

Date and time for the warning signal is Sunday 19th of June at 1000hrs.

6 COURSE

The course to sail is described in attachment 1. The course is approximately 654 NM.

7 MARKS, WAYPOINTS, BOUNDARY LINES, EXCLUSION ZONE.

- 7.1 The starting marks shall be the Race Committee Signal vessel at the starboard end of the starting line and the Race Committee Pin end vessel on the port end.
- 7.2 Marks 1 shall be yellow cylinder, mark 2 I the anchored Betico WPT 1 and WPT 2 GPS positions shall use the WGS84 datum
- 7.3 A boat shall satisfy the race committee they have rounded WPT 1 and WPT 2 to the race committee's satisfaction and a boat that fails to do so may be penalised



- 7.4 The finishing marks will be the red lateral mark “Denoel” at the entrance of “Petite Passe” of Noumea Port at the port end and the green lateral mark at the starboard end.
- 7.5 There are boundary lines (lines that marks the limits of the racing area) running around the start line, mark 1 and mark 2 during the time between the first warning signal until the last boat rounds the green mark “Ile aux canards”. Each boundary line lies between two adjacent floating buoys A, B, C, D, E, F, as defined in attachment 1.
Any boat crossing a boundary line shall be subject to protest by the race committee. Each boundary line is a continuing obstruction in respect of RRS. Infraction of this rule is not subject to protest by another boat. This changes rule RRS 60.1. (Attachment 1)
- 7.6 There is an exclusion zone around Belep Islands:
Boats shall not cross any line between:
WPT 1 and WPT 2; WPT 2 and WPT 3 ; WPT 3 and WPT 4 ; WPT 5 and WPT 6 ; WPT 6 and WPT 1.
GPS positions shall use the WGS84 datum described as follows:

WPT 1:	latitude 18° 47.74' South	longitude 163° 30.53' East
WPT 2:	latitude 19° 01.36' South	longitude 163° 02.36' East
WPT 3:	latitude 19° 32.43' South	longitude 163° 13.97' East
WPT 4:	latitude 20° 04.61' South	longitude 163° 41.72' East
WPT 5:	latitude 19° 48.45' South	longitude 164° 06.60' East
WPT 6:	latitude 19° 09.82' South	longitude 163° 48.66' East

Any boat crossing a line shall be subject to protest by the race committee. Each line is a continuing obstruction in respect of RRS. Infraction of this rule is not subject to protest by another boat. This changes rule RRS 60.1. (Attachment 1)

8 THE START

- 8.1 The race will be started by using RRS 26 with the warning signal given 5 minutes before the starting signal. The GROUPAMA flag will be used as class flag.
- 8.2 Individual recalls may be announced on radio (VHF channel 77)
- 8.3 The starting line will be between staffs displaying an orange flag on the starboard and port end.
- 8.4 A boat that fails to return and start when signalled in accordance with RRS 29.1 shall receive a 60-minute elapsed time penalty. This changes RRS Appendix A 4.2

9 THE FINISH

- 9.1 The finishing line is between the red lateral mark “Denoel” at the entrance of “Petite Passe” of Noumea port and the green lateral mark at the entrance of Noumea port. (Attachment 1)
- 9.2 When approaching the finishing line during the hours of darkness boats shall illuminate their sail number and confirm her identify on VHF channel 77.
Boats shall call GROUPAMA Race Control on channel 77 as soon as:
- They are located at 30 minutes from the finishing line
 - At any time the race committee requests
- Boats shall remain in contact using channel 77 once they are in the lagoon until anchored in Noumea.
- 9.3 Yachts finishing are required to take their own finishing time as the finishing line may not be manned. Yachts that take their own finishing time shall record it on the declaration form.

10 RADIO COMMUNICATION

A combination of VHF radio, mobile phone, and Iridium satellite phone will be used for position reporting and race communication. The race Communications Plan is at Attachment 3.
The use of external routing for the event is prohibited. Each skipper will sign a Declaration included in the check-out form.

11 PENALTY SYSTEM

- 11.1 RRS 44.1 (Two-Turns Penalty) will apply until clearing Cap NDua (.22°23'18.3"S 166°55'48.3"E)
After yachts are clear Cap NDua, RRS 44.3 will apply. A yacht that concedes a scoring penalty is required to complete a declaration as per Sailing Instruction 15.1.
- 11.2 In accordance with RRS 64.1(a) in determining penalties, the protest committee may:

- disqualify the yacht, or
- impose a scoring penalty as per RRS 44.3(c) as amended by Sailing Instruction 16.3, or
- Make any other arrangement.

12 TIME LIMIT

Time limit for finishing the course is Saturday 25th of June 1600hrs.

13 PROTESTS AND REQUESTS FOR REDRESS

- 13.1 Protest forms are available at the race office located in the Race Office upstairs of “Le bout du Monde”. Protests shall be delivered within the protest time limit.
- 13.2 Protest time limit is 2 hours after the protesting boat has finished the race. For yachts finishing in darkness, by 0900 hours the following day
- 13.3 Notices will be posted as soon as possible after the protest time limit to inform competitors of hearings in which they are parties or named as witnesses. Hearings will be held in the jury room located in the Race Office upstairs of “Le bout du Monde”.
- 13.4 Notices of protests by the race committee or protest committee will be posted to inform boats under rule 61.1(b).
- 13.5 Breaches of instructions 8, 9.2, 10, 15, 23, 24 will not be grounds for a protest by a boat. This changes rule 60.1(a).
- 13.6 A request for reopening a hearing shall be delivered no later than 60 minutes after the requesting party was informed of the decision on that day. This changes RRS 66.

14 RESULTS

Results will be scored both crew race and short-handed race ranking:

- The winner New Caledonia Groupama Race Main Trophy IRC
- Monohull GROUPAMA line Honours
- Multihull GROUPAMA line Honours
- Monohull IRC GROUPAMA offshore by group
- Monohull ORC GROUPAMA offshore by group
- Multihull Multi 2000 GROUPAMA offshore by group
- Short-handed Monohull IRC GROUPAMA offshore by group

Handicap systems for Monohulls:

- IRC: Results will be decided by the application of the IRC Time Corrector (T.C.C) as stated on the yacht's certificate as a multiplier of elapsed times. The boat with the lowest corrected time (after application of scoring penalties, if any) will be placed first and so on. Results will be overall and by group.
- ORC: Results will be decided by the application of the Time on Time (ToT) All Purpose as stated on the yacht's certificate, as a multiplier of elapsed times. The boat with the lowest corrected time (after application of scoring penalties, if any) will be placed first and so on. Results will be overall and by group.

Handicap systems for multihulls:

- Multihull results will be decided by the application of the Multi 2000 time corrector as stated on the yacht's certificate as a multiplier of elapsed time. The boat with the lowest corrected time (after application of scoring penalties, if any) will be placed first and so on. Results will be overall and by group
- Performance Handicap results will be decided by the application of the performance handicap corrector as a multiplier of elapsed times. The boat with the lowest corrected time (after application of scoring penalties, if any) will be placed first and so on. Results will be overall and by group

15 SAFETY REGULATIONS

15.1 Start Declaration and Finish Declaration

Start Declaration forms and crew list forms are to be lodged in the Race Office upstairs of “Le bout du Monde” prior to 1600hrs Saturday 18th June. Competitors (each member of the crew) living in France shall present a valid FFVoile license, bearing the medical stamp and parental consent in the case of minors.

Overseas skippers (RRS 46) shall show evidence of their membership of a WORLD SAILING member national authority.

Finish Declaration forms are to be lodged in the Race Office upstairs of "Le bout du Monde". For yachts finishing in daylight within two hours. For yachts finishing in darkness, by 0900 hours the following day.

- 15.2 A boat that retires from the race shall notify the race committee as soon as possible.
- 15.3 Radio communication will be on VHF radio channel 77, mobile phone and by iridium phone according to the Attachment 3.
- 15.4 Competitors shall wear personal flotation devices at all times when they are on deck during the race, without flag Y displayed before or with the warning signal. This changes RRS 40.
- 15.5 Each boat shall maintain a listening watch on channel 16 and 77 from the start to the finish of the race.
- 15.6 A boat shall carry a tracking device supplied by the organising authority. A boat on which such a unit fails or ceases to operate will be required to provide additional position reports by radio or Iridium phone.
- 15.7 Boats are required to log the time of rounding WPT 1 and WPT 2. The race committee may request a GPS log of rounding WPT 1 and WPT 2.
- 15.8 In accordance with RRS 42(i), a boat may use her engine whilst racing:
 - (a) If she cannot manoeuvre safely, or
 - (b) Is in danger of interfering with commercial traffic, or
 - (c) Has run aground, or
 - (d) Is in imminent danger of running aground.

Any engine use is to be declared on a yacht's Finish Declaration. The Race Committee will decide what action to take.

16. TEMPORARY DISCONTINUANCE FROM RACING (Amends RRS 41 and 45)

- 16.1 A boat after starting may use its motor or be towed to assist with anchoring or berthing when:
 - (a) taking shelter from extreme weather; or
 - (b) disembarking sick or injured crew who will take no further part in the race (such crew shall not be replaced); or
 - (c) attempting repairs.
- 16.2 For the purpose of Sailing Instruction 16.1, mechanical propulsion may be used only to assist with berthing or anchoring for a maximum distance of two nautical miles. When so anchored or moored other people may come aboard to effect repairs providing the boat continues in the race with the same stores and equipment as prior to seeking assistance. Boats shall not replace crew. When a boat resumes racing it may use its motor or be towed for a distance not exceeding 2 nautical miles out of any harbour or anchorage provided that the total of any such towing can be shown not to have advantaged the boat towards the finish.
- 16.3 A boat complying with RRS 1.1 (except as to its own crew), which sustains damage, may accept outside assistance to make good the damage, equipment provided that such assistance shall not be provided over a cumulative period exceeding 24 hours in total.
- 16.4 For the purpose of this Sailing Instruction a boat's elapsed time shall continue to accrue, except that the time taken under Sailing Instruction 16.3 may be included for the purposes of RRS 62.

17. EQUIPMENT AND MEASUREMENT CHECKS

- 17.1 A boat or equipment may be inspected at any time for compliance with the safety rules and sailing instructions.
- 17.2 Ratings used in calculating corrected time are in Attachment 4.

18. POWER

RRS 52 is amended to permit powered winches.

19. TRASH DISPOSAL

Boats shall not put trash in the water. Trash shall be kept on board until back ashore.

20. PRIZES

The prize giving will be held on 25th of June at Chateau Royal hotel at 1800 hrs.

Prizes will be allocated during the prize giving according to the Attachment 5.

A special prize may be given for the best videos and photos that will be transmitted during the race.

21 DISCLAIMER OF LIABILITY

- 21.1 All those taking part in the race do so at their own risk and responsibility. Neither CNC nor any company connected with the organising of the race is responsible for the seaworthiness of a boat whose entry is accepted, nor for the sufficiency or adequacy of its equipment. Owners shall accept full responsibility for the seaworthiness and safe navigation of their boats and competence of their crews.
- 21.2 Boat owners, skippers and crew should be aware that there may be uncharted obstacles under the waters on which the race is held. Such uncharted obstacles include reefs and rocks which could be a danger to boats and crews. CNC accepts no responsibility for any damage to or loss of any boat or for injury to or death of any crew person which may occur as a result of a collision with any underwater obstacle. All participants compete in races at their own risk.
- 21.3 Attention is drawn to Fundamental Rule 3, which states "The responsibility for a boat's decision to participate in a race or to continue racing is hers alone". Competitors participate in the race entirely at their own risk. The decision to race or to continue racing is their own responsibility. (RRS 3)
The organizing authority will not accept any liability for material damage or personal injury or death sustained in conjunction with or prior to, during or after the race.

22 ADVERTISING

Competitors shall display the advertisement provided by the Organizing Authority, according to the following instructions: sticker on the bow and the racing flag on the backstay at least 1.5m above the deck.

23 YELLOW BRICK TRACKERS

- 23.1 It is mandatory for all boats to carry the YB Tracker unit provided by the CNC whilst racing. The race tracking can be viewed on the race web site.
- 23.2 Nothing shall be done to inhibit YB Tracker transmissions.
- 23.3 YB Trackers remain the property of CNC. It is each skipper's responsibility to return his or her tracker in good condition. Each skipper is liable for the full replacement cost if they fail to return the tracker in good condition and time.

24 MEDIA

- 24.1 Boats shall call the race office with media information. The communication is made by group schedules according to the Attachment 3. Telephone number **to be communicated during the pre-race briefing**
0430 - 0530: Group 1
1400 - 1500: Group 2
- 24.2 Boats shall send at least 4 videos (30-45 seconds) and 10 photos during the race to groupamarace@gmail.com (HD/heavy files) or Whatsapp (LD/smartphone files) **Telephone number to be communicated during the pre-race briefing.**

Attachment 1

COURSE:

- Start
- Mark 1 rounded to port,
- Mark 2 rounded to port,
- Port starting mark rounded to port,
- Ilot Maitre Lighthouse rounded to starboard, (22°20'39.1"S 166°25'30.1"E)
- Green lateral mark Basse Thisbé passed to port (S 22° 26.83' – E 166° 26.95')
- Green lateral mark Basse Amedée rounded to port (S 22° 28.59' – E 166° 27.34')
- Amedee Lighthouse rounded to port, (22°28'38.39"S 166°28'4.63"E)

Please note: Sailing through Nokue channel (along south of Ouen Island) is prohibited

- Cap NDua rounded to port, (22°23'18.3"S 166°55'48.3")
- Waypoint **WPT 1** rounded to port (18°47.74' S 163°30.53' E)
- Waypoint **WPT 2** rounded to port (19°01.36' S 163°02.36' E)
- Finish

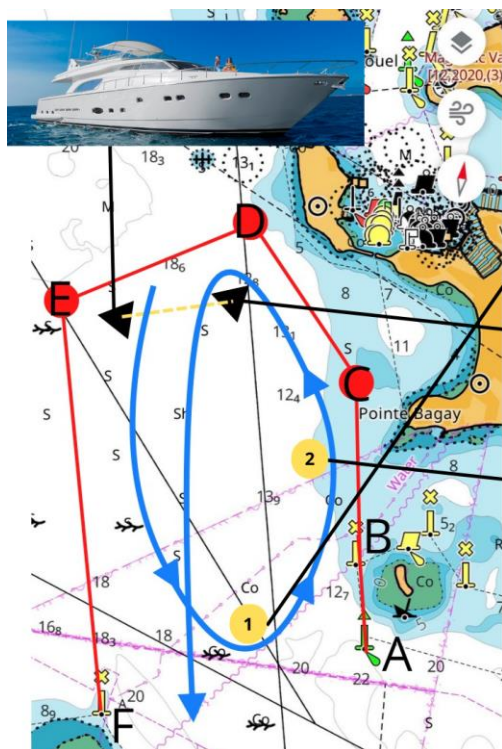
BOUNDARY LINES :

- Between the first warning signal and the time the last boat pass green mark "Ile aux canards", the boats cannot cross the boundary lines between two adjacent floating buoys: A, B, C, D, E, and F.

The boundary lines are designated by 6 floating buoys:

BOUNDARY LINE 1	A: Green lateral mark "Ile aux Canards"
BOUNDARY LINE 2	B: Saint Andre Buoy "Ile aux Canards"
BOUNDARY LINE 3	C: Orange cylinder
BOUNDARY LINE 4	D: Orange cylinder
BOUNDARY LINE 5	E: Orange cylinder
BOUNDARY LINE 6	F: Saint Andre Buoy "Ilôt Maitre"

Start and Boundary lines



- C-D-E : Inflatable wet buoys (red)
- B-F : Cross of Saint Andrew
- A : Îlot Canard Green Buoy
- 1 : Anchored inflatable buoy (yellow)
- 2 : Anchored Betico
- ▲ : End of line



Start : 10h00

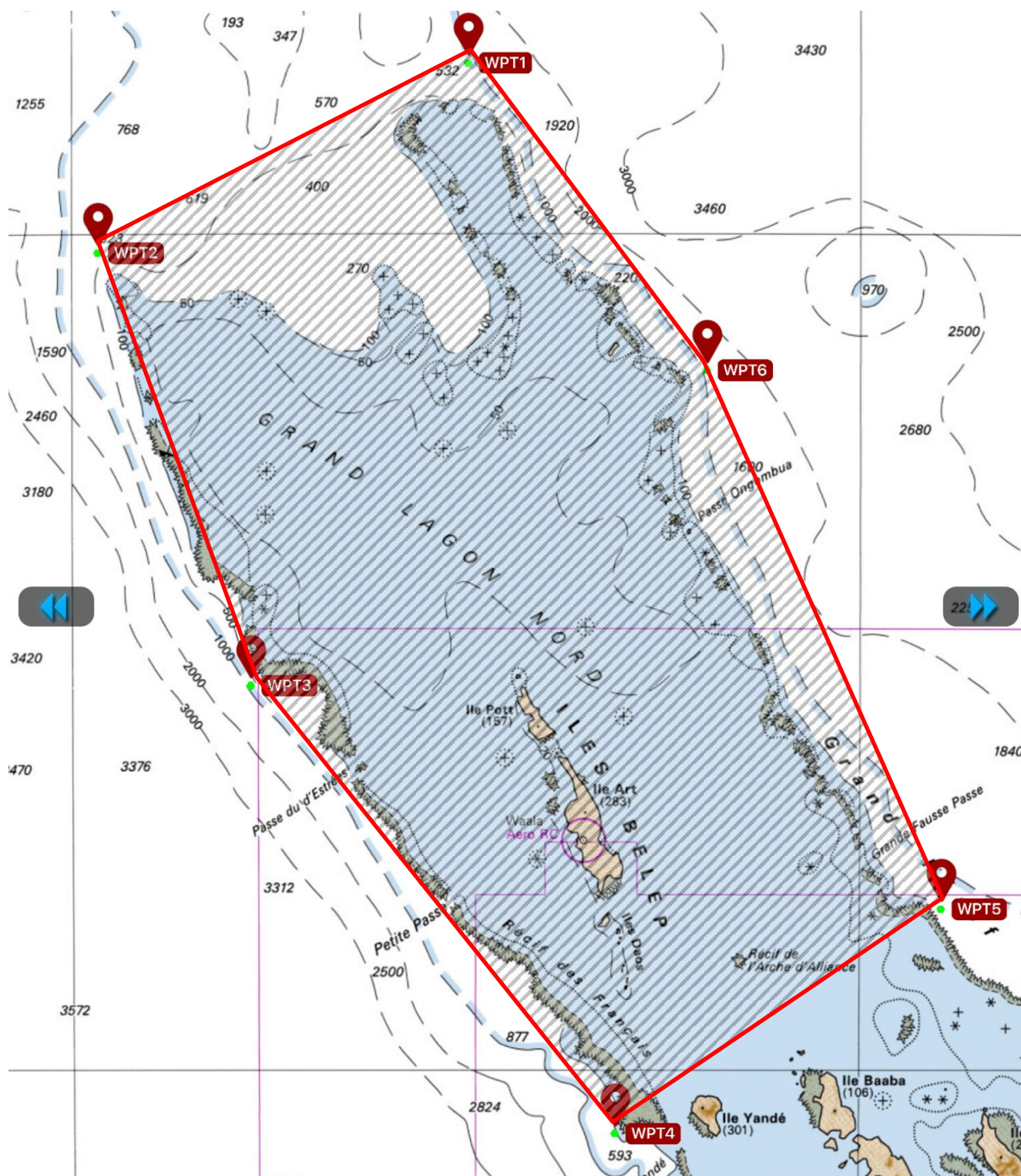
VHF on the water : 69
 VHF committee - competitors : 77
 VHF committee - land : 77

EXCLUSION ZONE

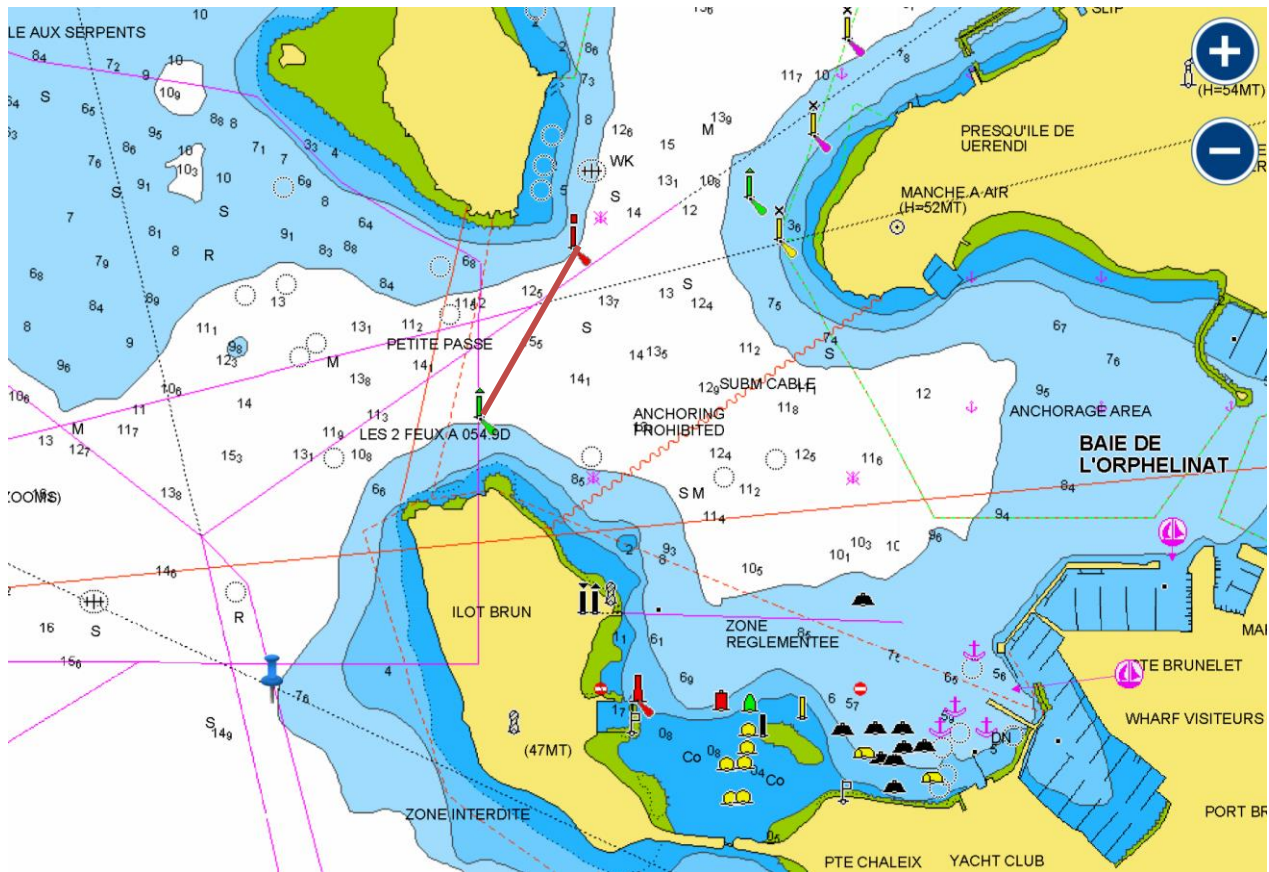
There is an exclusion zone around Belep Islands. Boats shall not cross any line between:
WPT 1 and WPT 2; WPT 2 and WPT 3 ; WPT 3 and WPT 4 ; WPT 5 and WPT 6 ;
WPT 6 and WPT 1.

The positions are:

WPT 1: latitude 18° 47.74' South	longitude 163° 30.53' East
WPT 2: latitude 19° 01.36' South	longitude 163° 02.36' East
WPT 3: latitude 19° 32.43' South	longitude 163° 13.97' East
WPT 4: latitude 20° 04.61' South	longitude 163° 41.72' East
WPT 5: latitude 19° 48.45' South	longitude 164° 06.60' East
WPT 6: latitude 19° 09.82' South	longitude 163° 48.66' East



FINISHING LINE



Attachment 2

Legal hours of sunset and sunrise

Day	Sunrise	Sunset
Sunday 19	06h30	17h16
Monday 20	06h31	17h16
Tuesday 21	06h31	17h16
Wednesday 22	06h31	17h17
Thursday 23	06h31	17h17
Friday 24	06h31	17h17
Saturday 25	06h32	17h17

Attachment 3

Boats shall keep listening watch on VHF on channel 77 and 16 at all times.

1 / YB Tracker: A YB Tracker unit is mounted on your boat by the organizing Authority. Do not touch the beacon during the entire race. Leave the antenna clear. Return beacon to the race secretariat after finishing.

2 / Position reporting: 2 sms messages will be sent on a daily basis by iridium at 07H00 and 17H00 with transmission of the positions of all the competitors (according to ship code, position X and Y), and possibly safety message.

3 / Media: boats shall call the race office for media information. The communication is made by group schedules if listed below. Telephone no: **to be communicated during the pre-race briefing**

0430– 0530: Group 1

VIXEN
OCEANS TRIBUTE
ANTIPODES
CIPANGO
TOSOT CLIMATISATION
BLADE RUNNER
KALOLO
U BY KOTEX – SNATCH N' FURIOUS
BCI BRER FOX
TEAM GROUPAMA
POUPITO MLS FCD

1400-1500: Group 2

RUSHOUR
MULEQUE
BLUE
XANAX – TOUS EN SAIL
WINGS
AXIANS UNTOUCHABLE
MOTORBOAT II
EYE CANDY
GUILTY PLEASURE - SPEED MARINE
DOVE – DEFI DES FILLES

4) Important phone numbers :

Race office: Matt (687) 79.72.75 / Olivier (687) 75.01.65 / Denis (race director) TBC

Lifeguards : (687) 29.23.32

Attachment 4

Entry list and divisions

ANTIPODES	IRC
AXIANS UNTOUCHABLE	IRC
BCI BRER FOX	IRC
BLADE RUNNER	IRC SHORT-HANDED
BLUE	IRC
CIPANGO	CRUISING
DOVE – DEFI DES FILLES	IRC
EYE CANDY	IRC
GUILTY PLEASURE - SPEED MARINE	IRC
KALOLO	MULTI 2000
MOTORBOAT II	IRC SHORT-HANDED
MULEQUE	IRC
OCEANS TRIBUTE	MULTI 2000
POUPITO MLS FCD	IRC
RUSHOUR	MULTI 2000
TEAM GROUPAMA	IRC
TOSOT CLIMATISATION	IRC SHORT-HANDED
U BY KOTEX – SNATCH N' FURIOUS	IRC
VIXEN	IRC
WINGS	IRC
XANAX – TOUS EN SAIL	IRC
	IRC SHORT-HANDED

Attachment 5

Trophies and Prizes

- The winner New Caledonia Groupama Race Main Trophy IRC
- 1st Monohull GROUPAMA line Honours prize
- 1st Multihull GROUPAMA line Honours prize
- 1st, 2nd, and 3rd Monohull IRC GROUPAMA offshore by group prize
- 1st, ORCC GROUPAMA offshore
- 1st, 2nd, and 3rd Multihull Multi 2000 GROUPAMA offshore
- 1st, 2nd, and 3rd Short-handed Monohull IRC GROUPAMA offshore

If there are two or less boats in a Group, no prizes will be awarded

If there are three to five boats in a Group, only first prize will be awarded

If there are six or more boats in a Group, first, second and third prizes will be awarded



START DECLARATION

Name of Skipper :

Boat Name:

Sail N°:

I _____, Skipper of the Boat named above, hereby declare that I am committed to race in the Groupama Race of my own free will, accepting without limitation or qualification, all the Rules, as defined the RRS and the safety regulations.

I have checked the Boat, and I am confident that she is seaworthy and has all the necessary safety equipment and all persons on board are fully briefed on how to use it.

I declare that I have a third party insurance during the race.

I declare that I will finally, before departure, check the weather forecast and, understand it is my responsibility to decide whether or not to start, or continue in the Race, in accordance with RRS Fundamental Rule 3.

I release from liability the organizers, the race director, the Jury, the Race Committee, and any other person or entity involved in organizing this Race in any capacity whatsoever.

Completed in Noumea on:

Signature

CREW LIST

CREW.

Title _____ Forename _____ Surname _____
 Street Address _____ Mobile / Cell _____
 Suburb / City _____ Home Phone _____
 State | | | | Post Code | | | | | Email _____

SHORE BASED NEXT OF KIN

Title _____ Forename _____ Surname _____
 Street Address _____ Mobile / Cell _____
 Suburb / City _____ Home Phone _____
 State | | | | Post Code | | | | | Business Phone _____

CREW.

Title _____ Forename _____ Surname _____
 Street Address _____ Mobile / Cell _____
 Suburb / City _____ Home Phone _____
 State | | | | Post Code | | | | | Email _____

SHORE BASED NEXT OF KIN

Title _____ Forename _____ Surname _____
 Street Address _____ Mobile / Cell _____
 Suburb / City _____ Home Phone _____
 State | | | | Post Code | | | | | Business Phone _____

CREW.

Title _____ Forename _____ Surname _____
 Street Address _____ Mobile / Cell _____
 Suburb / City _____ Home Phone _____
 State | | | | Post Code | | | | | Email _____

SHORE BASED NEXT OF KIN

Title _____ Forename _____ Surname _____
 Street Address _____ Mobile / Cell _____
 Suburb / City _____ Home Phone _____
 State | | | | Post Code | | | | | Business Phone _____

CREW.

Title _____ Forename _____ Surname _____
 Street Address _____ Mobile / Cell _____
 Suburb / City _____ Home Phone _____
 State | | | | Post Code | | | | | Email _____

SHORE BASED NEXT OF KIN

Title _____ Forename _____ Surname _____
 Street Address _____ Mobile / Cell _____
 Suburb / City _____ Home Phone _____
 State | | | | Post Code | | | | | Business Phone _____

Boat Name..... Crew number :.....

CREW LIST**CREW.**

Title _____ Forename _____ Surname _____
 Street Address _____ Mobile / Cell _____
 Suburb / City _____ Home Phone _____
 State | | | | Post Code | | | | | Email _____

SHORE BASED NEXT OF KIN

Title _____ Forename _____ Surname _____
 Street Address _____ Mobile / Cell _____
 Suburb / City _____ Home Phone _____
 State | | | | Post Code | | | | | Business Phone _____

CREW.

Title _____ Forename _____ Surname _____
 Street Address _____ Mobile / Cell _____
 Suburb / City _____ Home Phone _____
 State | | | | Post Code | | | | | Email _____

SHORE BASED NEXT OF KIN

Title _____ Forename _____ Surname _____
 Street Address _____ Mobile / Cell _____
 Suburb / City _____ Home Phone _____
 State | | | | Post Code | | | | | Business Phone _____

CREW.

Title _____ Forename _____ Surname _____
 Street Address _____ Mobile / Cell _____
 Suburb / City _____ Home Phone _____
 State | | | | Post Code | | | | | Email _____

SHORE BASED NEXT OF KIN

Title _____ Forename _____ Surname _____
 Street Address _____ Mobile / Cell _____
 Suburb / City _____ Home Phone _____
 State | | | | Post Code | | | | | Business Phone _____

CREW.

Title _____ Forename _____ Surname _____
 Street Address _____ Mobile / Cell _____
 Suburb / City _____ Home Phone _____
 State | | | | Post Code | | | | | Email _____

SHORE BASED NEXT OF KIN

Title _____ Forename _____ Surname _____
 Street Address _____ Mobile / Cell _____
 Suburb / City _____ Home Phone _____
 State | | | | Post Code | | | | | Business Phone _____

Boat Name..... Crew number :.....

CREW LIST

CREW.

Title _____ Forename _____ Surname _____
 Street Address _____ Mobile / Cell _____
 Suburb / City _____ Home Phone _____
 State | | | | Post Code | | | | | Email _____

SHORE BASED NEXT OF KIN

Title _____ Forename _____ Surname _____
 Street Address _____ Mobile / Cell _____
 Suburb / City _____ Home Phone _____
 State | | | | Post Code | | | | | Business Phone _____

CREW.

Title _____ Forename _____ Surname _____
 Street Address _____ Mobile / Cell _____
 Suburb / City _____ Home Phone _____
 State | | | | Post Code | | | | | Email _____

SHORE BASED NEXT OF KIN

Title _____ Forename _____ Surname _____
 Street Address _____ Mobile / Cell _____
 Suburb / City _____ Home Phone _____
 State | | | | Post Code | | | | | Business Phone _____

CREW.

Title _____ Forename _____ Surname _____
 Street Address _____ Mobile / Cell _____
 Suburb / City _____ Home Phone _____
 State | | | | Post Code | | | | | Email _____

SHORE BASED NEXT OF KIN

Title _____ Forename _____ Surname _____
 Street Address _____ Mobile / Cell _____
 Suburb / City _____ Home Phone _____
 State | | | | Post Code | | | | | Business Phone _____

CREW.

Title _____ Forename _____ Surname _____
 Street Address _____ Mobile / Cell _____
 Suburb / City _____ Home Phone _____
 State | | | | Post Code | | | | | Email _____

SHORE BASED NEXT OF KIN

Title _____ Forename _____ Surname _____
 Street Address _____ Mobile / Cell _____
 Suburb / City _____ Home Phone _____
 State | | | | Post Code | | | | | Business Phone _____

Boat Name..... Crew number :.....



FINISH DECLARATION

Name of Skipper :

Boat Name:

Sail N°:

I _____, Skipper of the Boat named above, confirm that I have competed the Race, and complied with all the Rules, as defined the RRS and the safety regulations

I declare I haven't received any outside assistance other than that specifically allowed for in the Rules.

I declare the following infringements were made;

1.

Reason.....

Action Taken.....

2.

Reason.....

Action Taken.....

Completed in Noumea, on:

Signature